

renovation

Des res

Malone's stylish, open-plan residence is in the Pomeroy apartment block, Potts Point. Below right, the apartment's balcony with harbour views.



Reflected glory

Below, mirrors create instant wow factor in the hallway and maximise the feeling of space and light. Halogen lights highlight Malone's artwork collection.



Celebrity style

A Manhattan-glam makeover gives an inner-city apartment star quality.

INTERIOR design specialist Lynn Malone (pictured) landed the chance of a lifetime when she met neighbour Elton John in a lift.

"In the minute it took the elevator to reach our apartments, I was organising a fund-raiser for his AIDS Foundation," says Malone, who has since moved her marketing and publicity company, Ultra Group, from the US to Sydney.

A signed portrait of the star now sits alongside her extensive art and glass collection, glamourising a series of apartments she has remodelled, including this stylish creation in Potts Point.

Malone bought the two-bedroom residence off the plan, but while she loved the city views and slick features, installed by developers

PHOTO COURTESY, JACOBS LAMBERTS



Winsten Property Group, she wanted to personalise the home.

"Several finishes were not to my taste," says Malone, who wanted a light-filled gallery and entertaining space. "The kitchen cabinets were poorly constructed and the doors were difficult to open and close. Underbench lighting was fluorescent, which was harsh and unflattering, and the entry hall was long and uninteresting."

Orchestrating an instant pick-me-up, she placed a stone bench in an alcove in the entry foyer and lined the lengthy passageway to the lounge room with ceiling-to-sirting mirrors. "It created a sense of arrival and turned an average hallway into

an art gallery," she says.

But with so many designer artefacts to display, she wanted to transform the second bedroom and open-plan living area, too. As the bedroom door slid into a cavity, Malone kept the room constantly open to enhance the feeling of space and to showcase a large painting (pictured above) by Archibald Prize winner Adam Cullen.

In the adjoining living room, a bespoke floor-to-ceiling joinery unit, with bookshelves and entertainment alcove, concealed clutter and surround-sound wiring as well as highlighting glass objects. Lit by dimmer-controlled halogen lights in eight, mirror-backed display boxes, the sparkling collectables were further enhanced by a stainless-steel-lined EcoSmart fireplace, which is fuelled by methylated spirits.

"The joinery cost about \$10,000 and took four weeks to make," says Malone, who felt impatient for the



Putting on the glitz Mirrors above the bed in the master bedroom give a touch of bling to the bold decor. Right, large, north-west facing windows fill the kitchen/diner with natural light, while rustic reds on the leather chairs and olive-hued cabinets warm the space.



The long, 2006 Archibald Prize. The work in the hallway, between The Lines, by Kelle Coris, welcomes visitors to the contemporary apartment.



Art space Above left, a dedicated gallery was set up in the second bedroom to display works including Adam Culnan's portrait of David Wenham, winner of the 2006 Archibald Prize. The work in the hallway, *Between The Lines*, by Kelle Coris, welcomes visitors to the contemporary apartment.

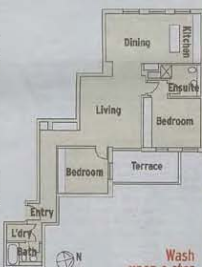
\$30,000 project to reach its completion. Maintaining a sense of warmth and flow was central to her style. Choosing an olive-green colour, she brightened selected unit alcoves and renovated walls. "The apartment was painted shades of Dulux China White. I decided the most effective way to add a punch of colour was to paint one lounge-room wall that wrapped into the kitchen with the alcove green."

The same attention was applied to the kitchen. "I wanted to bring the outside in, so I replaced the original splashback with clear, toughened mirror, upgraded the appliances and replaced the glass and timber cabinetry above the cooktop with smooth-functioning, polyurethane-finished cupboards," she says.

The resulting mix of Manhattan glam and bold, Australian style was the recipe for success. The apartment quickly sold and Malone is working on her fifth renovation nearby. Perhaps her old neighbour, Elton John, will pop over for tea during his tour this month. But if he does, Malone will remain focused.

"With each apartment I learn and improve, but I always have fun," she says. "I suppose I'm slightly addicted to doing it."

BECKY BARKER



Wash upon a star
A signed portrait of Sir Elton John hangs in pride of place in the bathroom.



Highs and glows Storage issues were solved with neat, wall-length alcoves. The EcoSmart fire is ideal for the space as it needs no ventilation or utility connection for fuel supply.

Challenges

Being patient. "I wanted everything to be completed quickly but it takes time to have custom-built joinery made," Malone says.

Removing an enormous, leaky balcony planter via the kitchen's pristine lift.

Tips

Do the research, budget wisely and invest in quality improvements that you will enjoy and that add value.

The kitchen's CaesarStone gunmetal benchtop was not ideal. "Dark colours look great when freshly cleaned but show every mark and fingerprint," Malone says.

Contact

LynnMalone Design, phone 0408 772880.

Rugs & carpet that tread the fine line between fashion & forever.

TSAR
RUGS AND CARPETS

Tsar Surry Hills, Sydney
196 Pittwater Street, Ph: 95374244
www.tsar.com.au



renovation

Des res

Malone's stylish, open-plan residence is in the Pomeroy apartment block, Potts Point. Below right, the apartment's balcony with harbour views.



Reflected glory

Below, mirrors create instant wow factor in the hallway and maximise the feeling of space and light. Halogen lights highlight Malone's artwork collection.



Celebrity style

A Manhattan-glam makeover gives an inner-city apartment star quality.

INTERIOR design specialist Lynn Malone (pictured) landed the chance of a lifetime when she met neighbour Elton John in a lift.

"In the minute it took the elevator to reach our apartments, I was organising a fund-raiser for his AIDS Foundation," says Malone, who has since moved her marketing and publicity company, Ultra Group, from the US to Sydney.

A signed portrait of the star now sits alongside her extensive art and glass collection, glamourising a series of apartments she has remodelled, including this stylish creation in Potts Point.

Malone bought the two-bedroom residence off the plan, but while she loved the city views and slick features, installed by developers

PHOTO COURTESY, JACOBS LUMBER



Winsten Property Group, she wanted to personalise the home.

"Several finishes were not to my taste," says Malone, who wanted a light-filled gallery and entertaining space. "The kitchen cabinets were poorly constructed and the doors were difficult to open and close. Underbench lighting was fluorescent, which was harsh and unflattering, and the entry hall was long and uninteresting."

Orchestrating an instant pick-me-up, she placed a stone bench in an alcove in the entry foyer and lined the lengthy passageway to the lounge room with ceiling-to-sirting mirrors. "It created a sense of arrival and turned an average hallway into

an art gallery," she says.

But with so many designer artefacts to display, she wanted to transform the second bedroom and open-plan living area, too. As the bedroom door slid into a cavity, Malone kept the room constantly open to enhance the feeling of space and to showcase a large painting (pictured above) by Archibald Prize winner Adam Cullen.

In the adjoining living room, a bespoke floor-to-ceiling joinery unit, with bookshelves and entertainment alcove, concealed clutter and surround-sound wiring as well as highlighting glass objects. Lit by dimmer-controlled halogen lights in eight, mirror-backed display boxes, the sparkling collectables were further enhanced by a stainless-steel-lined EcoSmart fireplace, which is fuelled by methylated spirits.

"The joinery cost about \$10,000 and took four weeks to make," says Malone, who felt impatient for the



Putting on the glitz Mirrors above the bed in the master bedroom give a touch of bling to the bold decor. Right, large, north-west facing windows fill the kitchen/diner with natural light, while rustic reds on the leather chairs and olive-hued cabinets warm the space.

